

BAX® System

Real-Time PCR Assay for *Vibrio* (*cholerae/parahaemolyticus/vulnificus*)

For seafood processors and inspectors, current *Vibrio* culture methods require at least 3–5 days for results and subjective interpretation. The BAX® System Real-Time PCR Assay for *Vibrio cholerae/parahaemolyticus/vulnificus*, however, delivers differentiated results that are reliable and highly specific to these three common strains of *Vibrio* in less than 24 hours.



Features & Benefits:

- Clear yes-or-no results in as little as 19 hours for select matrices
- Compatible with other BAX® System assays for efficient processing
- Validated to perform as well or better than standard reference methods for listed product types
- Multiplex technology generates a positive result if any one of 3 pathogenic *Vibrio* species are present (*cholerae*, *parahaemolyticus*, *vulnificus*)
- Carefully designed primers target specific genetic sequences possessed only by the target organisms
- Minimal components and simplified workflows to maximize efficiency and ease-of-use
- Internal controls included in every test to validate results even in absence of target
- Flexible protocols available to meet your unique workflows

Validations, Certifications and Adoptions:

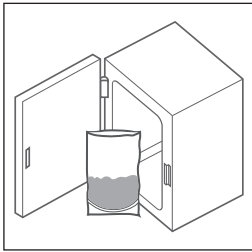
- **AOAC Research Institute**
Performance Tested MethodSM #050902
Validated for presence/absence testing for tuna, shrimp and scallops. Validated for MPN analysis for shrimp, scallops and oysters

Hygiena Product Code	Legacy Order Code	Description	Quantity
KIT2010	D12863877	BAX® System Real-Time PCR Assay for <i>Vibrio</i>	96 tests per kit

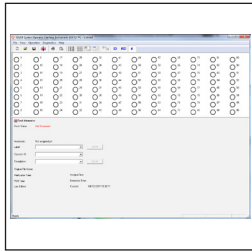


Find support documents, instructional videos, and more at www.hygiena.com

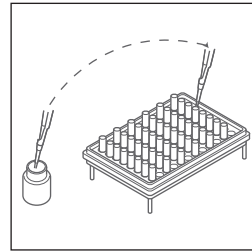
BAX® System Protocol



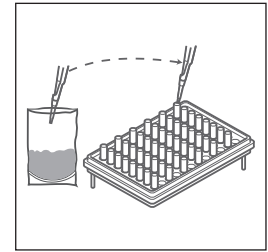
Enrich Samples



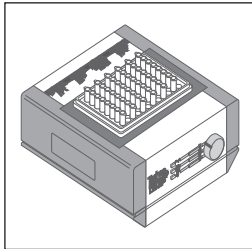
Create rack file and warm up cyclor.



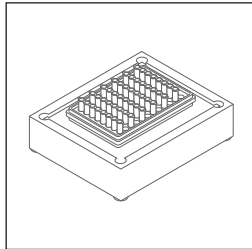
Mix protease with lysis buffer and transfer 200 µL of mixture to cluster tubes.



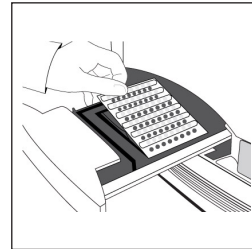
Transfer 5 µL sample to cluster tubes.



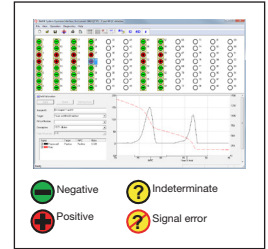
Place samples on automated thermal block for lysis and cooling



Transfer 30 µL of lysed sample to PCR tubes in cooling block.



Place sealed PCR tubes in cyclor and run program.



Review results.

Related Products

BAX® System Real-Time PCR Assay for Genus *Listeria*

With a shortened, simplified sample preparation procedure and real-time processing, this assay provides a fast and accurate molecular testing method for *Listeria* in food and environmental samples.

BAX® System Real-Time PCR Assay for *Salmonella*

Uses real-time PCR technology to reduce processing time to about one hour, helping food companies make product release decisions with speed and confidence.

Hygiene Product Code	Legacy Order Code	Description	Quantity
KIT2019	D15131113	BAX® System Real-Time PCR Assay for Genus <i>Listeria</i>	96 tests per kit
KIT2006	D14306040	BAX® System Real-Time PCR Assay for <i>Salmonella</i>	96 tests per kit



Find support documents, instructional videos, and more at www.hygiene.com