

# BAX® System

## Real-Time PCR Assay for *Shigella*

Food companies and government labs that use standard culture methods to screen food for *Shigella* can now use the BAX® System to quickly eliminate negative results and reduce the number of samples that must be confirmed. Using real-time PCR technology, the BAX® System produces reliable screening results in less than two hours after enrichment. Fewer presumptive positive results means reduced hands-on time and cost for culture confirmations, improving operational efficiency and leading to earlier product release decisions.



### Features & Benefits:

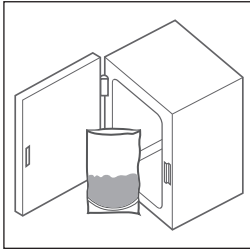
- Clear yes-or-no results in as little as 10 hours for select matrices
- Compatible with other BAX® System assays for efficient processing
- Carefully designed primers target specific genetic sequences possessed only by the target organisms
- Minimal components and simplified workflows to maximize efficiency and ease-of-use
- Internal controls included in every test to validate results even in absence of target
- Flexible protocols available to meet your unique workflows
- Internally validated for frankfurters, cooked meats, raw pork, dessert gelatin, ready-to-eat prepared dishes, non-fermented soy products, lunch meals and granulated white sugar.

Hygiena Product Code	Legacy Order Code	Description	Quantity
KIT2007	D14812018	BAX® System Real-Time PCR Assay for <i>Shigella</i>	96 tests per kit

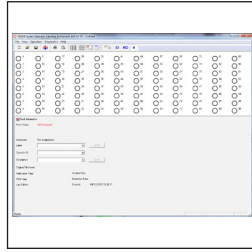


Find support documents, instructional videos, and more at [www.hygiena.com](http://www.hygiena.com)

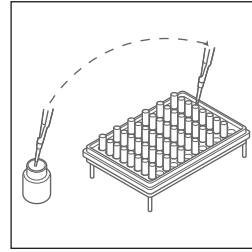
# BAX® System Protocol



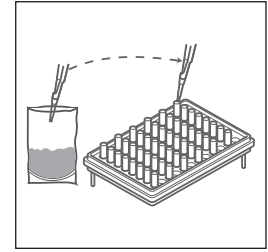
Enrich Samples



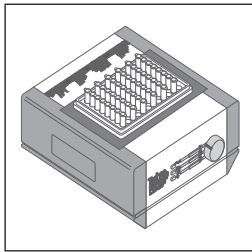
Create rack file and warm up cyclor.



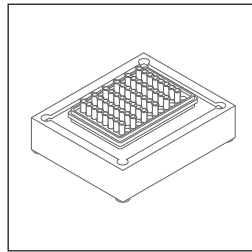
Mix protease with lysis buffer and transfer 200 µL of mixture to cluster tubes.



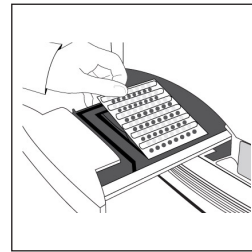
Transfer 5 µL sample to cluster tubes.



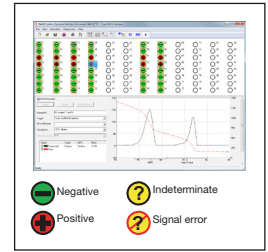
Place samples on automated thermal block for lysis and cooling



Transfer 30 µL of lysed sample to PCR tubes in cooling block.



Place sealed PCR tubes in cyclor and run program.



Review results.

● Negative    ? Indeterminate  
● Positive    ! Signal error

## Related Products

### BAX® System Real-Time PCR Assay for *Staphylococcus aureus*

Harnesses the power of the polymerase chain reaction to detect *Staph aureus* in food and environmental samples with minimal operator handling.

### BAX® System Real-Time PCR Assay for *Salmonella*

Provides accurate, reliable *Salmonella* detection in raw ingredients, finished products and environmental samples using real-time PCR technology to reduce processing time to about one hour.

Hygienea Product Code	Legacy Order Code	Description	Quantity
KIT2020	D12762689	BAX® System Real-Time PCR Assay for <i>Staphylococcus aureus</i>	96 tests per kit
KIT2006	D14306040	BAX® System Real-Time PCR Assay for <i>Salmonella</i>	96 tests per kit



Find support documents, instructional videos, and more at [www.hygienea.com](http://www.hygienea.com)