

BAX® System

Real-Time PCR Assay for Genus *Listeria*

The BAX® System Real-Time PCR assay for Genus *Listeria* can help companies monitor their environment and products for contamination with *Listeria*, a common indicator organism for other pathogens, such as *Listeria monocytogenes*. With a shortened, simplified sample preparation procedure and rapid real-time processing, this assay provides a fast and accurate molecular testing method for *Listeria* species in food and environmental samples.



Features & Benefits:

- Clear yes-or-no results in as little as 25 hours for select matrices
- Compatible with other BAX® System assays for efficient processing
- Carefully designed primers target specific genetic sequences possessed only by the target organisms
- Validated to perform as well or better than standard reference methods for listed product types
- Minimal components and simplified workflows to maximize efficiency and ease-of-use
- Internal controls included in every test to validate results even in absence of target
- Flexible protocols available to meet your unique workflows

Validations, Certifications and Approvals:

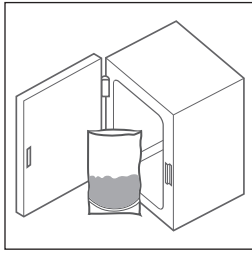
- **AOAC Research Institute**
Performance Tested MethodSM #081401
Validated on frankfurters, cooked shrimp, smoked salmon, spinach, bagged lettuce, queso fresco cheese and environmental surfaces

Hygiena Product Code	Legacy Order Code	Description	Quantity
KIT2019	D15131113	BAX® System Real-Time PCR Assay for Genus <i>Listeria</i>	96 tests per kit

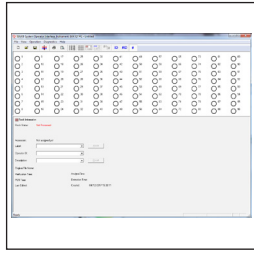


Find support documents, instructional videos, and more at www.hygiena.com

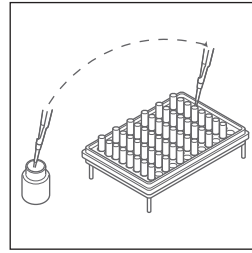
BAX® System Protocol



Enrich Samples.
- See Bax® System user Guide.

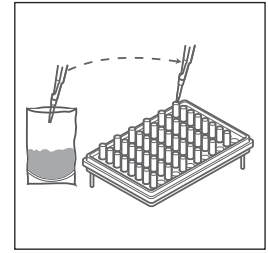


Create rack file and warm up cycler.

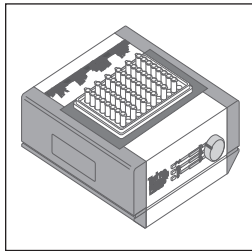


Mix protease, Lysing Agent 2 and lysis buffer to create lysing reagent.*

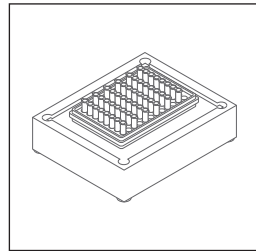
* Lysing reagent prepared with protease and Lysing Agent 2 can be stored at 2-8°C for up to 1 week.



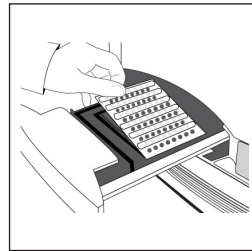
Transfer 200 µL lysing reagent and 5 µL sample enrichment to cluster tubes.



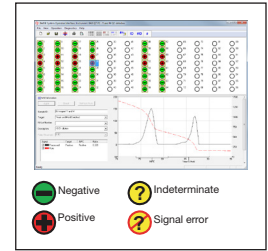
Place samples on automated thermal block for lysis and cooling.



Transfer 30 µL of lysed sample to PCR tubes in cooling block.



Place sealed PCR tubes in cycler and run program.



Review results.

● Negative ? Indeterminate
● Positive ? Signal error

Related Products

24 LEB Complete

Available enrichment media for customers looking to take full advantage of the rapid time-to-result and ease-of-use offered by select BAX® System *Listeria* assays.

BAX® System Real-Time PCR Assay for *Salmonella*

Provides accurate, reliable *Salmonella* detection in raw ingredients, finished products and environmental samples using real-time PCR technology to reduce processing time to about one hour.

BAX® System Real-Time PCR Assay for *L. monocytogenes*

With a shortened, simplified sample preparation procedure and real-time processing, this assay provides a fast and accurate molecular testing method for *L. monocytogenes* in food and environmental samples.

Actero™ Elite *Listeria* Enrichment Media

A selective bacterial culture medium specifically optimized for the recovery of *Listeria spp.* and *Listeria monocytogenes* from environmental and food samples in a single-step enrichment.

Hygiene Product Code	Legacy Order Code	Description	Quantity
MED2005	D14654989	24 LEB Complete	2.5 kg tub
KIT2006	D14306040	BAX® System Real-Time PCR Assay for <i>Salmonella</i>	96 tests per kit
KIT2005	D15134303	BAX® System Real-Time PCR Assay for <i>L. monocytogenes</i>	96 tests per kit
MED2017 / MED2018 / MED2020	FCM-011 / FCM-022 / FCM-023	Actero™ Elite <i>Listeria</i> Enrichment Media (Dehydrated)	500g / 2kg / 10kg



Find support documents, instructional videos, and more at www.hygiene.com/bax